

RERA REGISTRATION NO.:  
RC/REP/HARERA/GGM/664/396/2023/08  
RC/REP/HARERA/GGM/665/397/2023/09  
WWW.HARYANARERA.GOV.IN

# ASCEND TO THE **SIGNATURE** — LIFE —

 **SIGNATURE  
GLOBAL CITY 92-2**  
SECTOR 92, GURUGRAM

 **SIGNATURE<sup>®</sup>  
GLOBAL**  
MAKING INDIA AFFORDABLE  
AN ISO 9001:2015; 14001:2015; 45001:2018 CERTIFIED COMPANY

SIGNATURE INFRABUILD PRIVATE LIMITED | CIN NO. : U70100DL2013PTC247676

REGD. OFFICE: 13TH FLOOR, 28 BARAKHAMBA, ROAD, CONNAUGHT PLACE, NEW DELHI - 110001

CORP. OFFICE: GROUND FLOOR, TOWER-A, SIGNATURE TOWER, SOUTH CITY-1, GURUGRAM, HARYANA- 122001

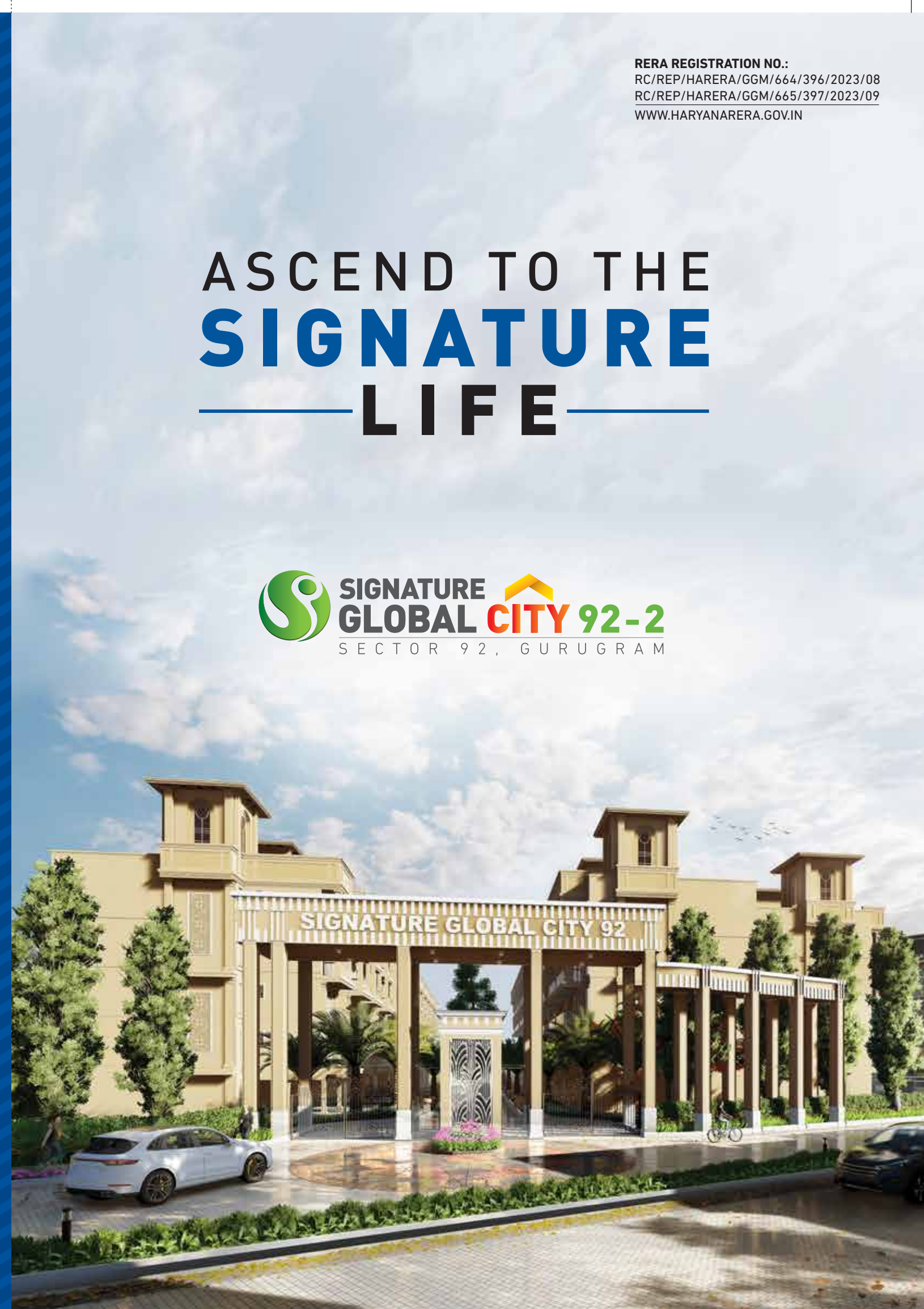
[www.signatureglobal.in](http://www.signatureglobal.in)

#### DISCLAIMER :

PROMOTER URGES EVERY APPLICANT TO INSPECT THE PROJECT SITE AND SHALL NOT MERELY RELY UPON ANY ARCHITECTURAL IMPRESSION, PLAN OR SALES BROCHURE AND, THEREFORE, REQUESTS TO MAKE PERSONAL JUDGMENT PRIOR TO SUBMITTING AN APPLICATION FOR ALLOTMENT. THE PROJECT IS BEING DEVELOPED IN PHASES, HENCE, CERTAIN FACILITIES/AMENITIES ETC, MAY BE USED BY ALLOTTEE OF OTHER PHASES. UNLESS OTHERWISE STATED, ALL THE IMAGES, VISUALS, MATERIALS AND INFORMATION CONTAINED HEREIN ARE PURELY CREATIVE/ARTISTIC AND MAY NOT BE ACTUAL REPRESENTATIONS OF THE PRODUCT AND/OR ANY AMENITIES. FURTHER, THE ACTUAL DESIGN MAY VARY IN THE FIT AND FINISHED FORM, FROM THE ONE DISPLAYED ABOVE. JOURNEY TIME SHOWN, IF ANY, IS BASED UPON GOOGLE MAPS WHICH MAY VARY AS PER THE TRAFFIC AT A RELEVANT POINT OF TIME.

\*RATE MENTIONED ABOVE DOES NOT INCLUDE GST AND OTHER STATUTORY CHARGES, IF APPLICABLE. T & C APPLY. 1 SQ. MT. = 10.7639 SQ. FT.

FOR ANY QUERY PLEASE SPEAK TO OUR CUSTOMER RELATIONSHIP MANAGER







**SIGNATURE  
GLOBAL CITY 92-2**  
SECTOR 92, GURUGRAM

Rediscover a good lifestyle, enjoy a well-connected life with proximity to major highways. This is where you can meet and entertain your guests at a specially curated Private Service Area. This residential complex is an epitome of green building; constructed with eco-friendly processes and practices. Here, rejuvenate in nature's freshness; enjoy a touch of serenity and peace in the society. To make your life comfortable and hassle-free here, world class amenities are provided along with high-end security.



## GREAT FEATURES AROUND THE PROJECT

- Sector 92 enjoys its proximity to key employment hubs of the city like Cyber City, Udyog Vihar, Golf Course Extension Road, Sohna, Manesar, etc.
- Major industrial employment centre of Manesar is in close proximity.
- Kadipur industrial area is in close vicinity.
- Moreover, there is easy connectivity to the city's employment hubs through Pataudi Road, NH8, Dwarka Expressway, Western Peripheral Expressway and Southern Peripheral Road. Another point about this sector which makes it an ideal residential destination is strong social infrastructure in the neighbourhood and proposed metro line.
- The sector has witnessed development of several residential projects in the vicinity.
- Residential projects in these places are ideal for those who choose to surround themselves by abundant greenery with the soothing sound of nature.
- Well established network of Schools like Ipsaa: Pre-school, Pranavananda International School, Rao Bharat Singh Intl School, Hospitals like Genesis Hospital, Medeor Hospital, Manesar, ESIC Hospital, Manesar, Medanta Medicity, Shopping Malls, Retail Markets and Five Star Hotels.
- The sector has witnessed good returns in terms of rent because it has an ideal location for the people who are always on the move and work in the private and retail sectors.
- Easy access to international airport via NH-8 and Dwarka Expressway









**SIGNATURE GLOBAL CITY 92-2**  
SECTOR 92, GURUGRAM



ITC GRAND BHARAT

<p><b>HOSPITALS</b></p> <ul style="list-style-type: none"> <li>Aarvy Hospital</li> <li>Krishna Hospital</li> <li>Global Hospital &amp; Trauma Centre</li> <li>ARc Multispeciality hospital</li> </ul>	<p><b>CONNECTIVITY</b></p> <ul style="list-style-type: none"> <li>Dwarka Expressway</li> <li>Hero Honda Chowk</li> <li>Kherki Daula, NH-8</li> <li>Airport</li> </ul>	<p><b>SCHOOLS</b></p> <ul style="list-style-type: none"> <li>RPS International School</li> <li>Yaduvanshi Shiksha Niketan</li> <li>Pranavananda International School</li> <li>Sanskar Jyoti School</li> </ul>	<p><b>HOTELS</b></p> <ul style="list-style-type: none"> <li>Hyatt Regency</li> <li>Heritage Village Spa &amp; Resort</li> <li>ITC Grand Bharat</li> <li>Karma Lake Lands</li> </ul>
---	---	---	---







WALK UP  
THE PATH TO AN  
UPSCALE LIFE.



PARK YOURSELF  
TO THE GOOD LIFE



KIDS' PLAY AREA



BADMINTON  
COURT





ENJOY A NEW  
WAVE OF LIVING.  
IN A SPARKING POOL.



AIM HIGH.  
BASKET THE BALL



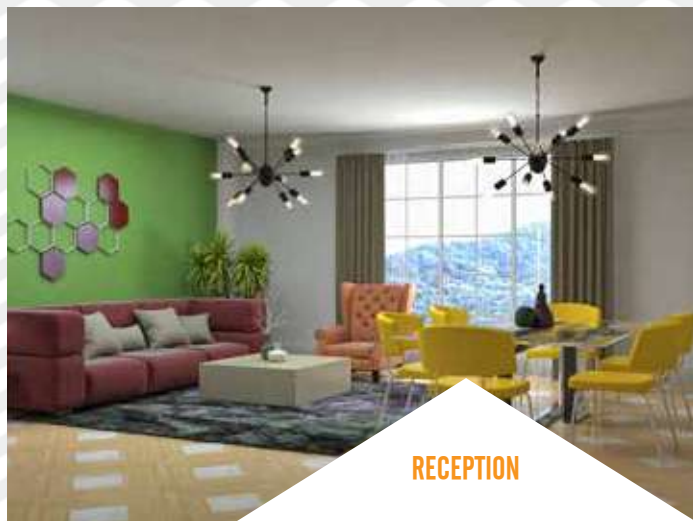
ENJOY AN  
URBAN LIFESTYLE,  
IN THE LAP OF NATURE.



FAMILY SHOPPING  
GETS REDEFINED.



# FEATURES OF A CLUB HOUSE





# AMENITIES



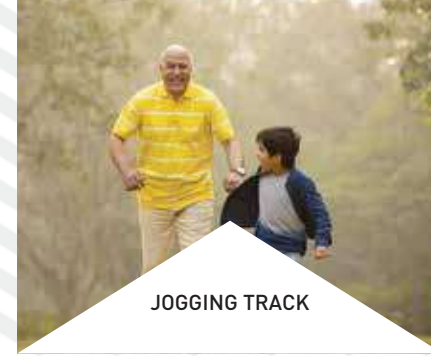
DEDICATED LIFTS  
FOR STILT+4 FLOORS



DEDICATED  
CAR PARKING



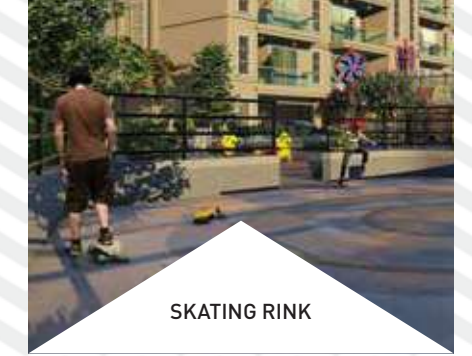
OUTDOOR GYM



JOGGING TRACK



OPEN-AIR  
AMPHITHEATRE



SKATING RINK



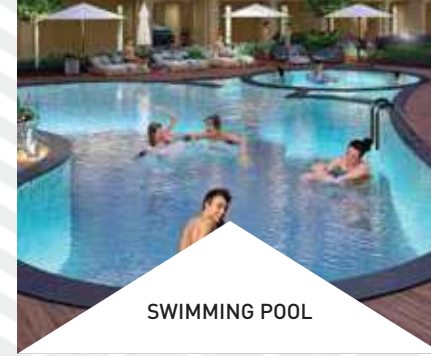
BUTTERFLY  
GARDEN



MULTIPURPOSE  
LAWN



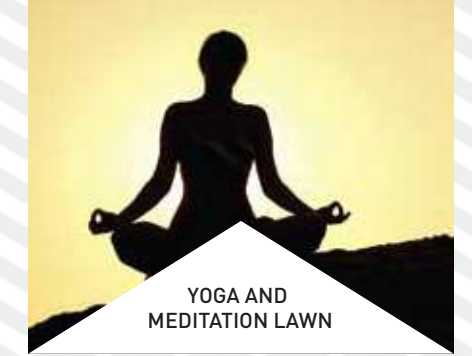
BADMINTON  
COURT



SWIMMING POOL



CLUBHOUSE



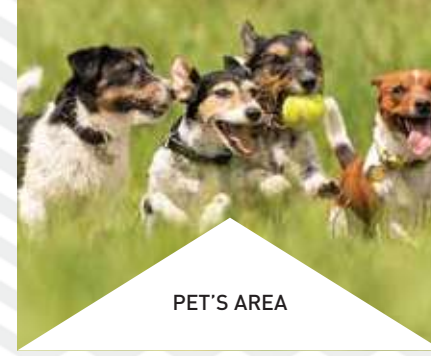
YOGA AND  
MEDITATION LAWN



HALF BASKETBALL  
COURT



TODDLERS'  
PLAY AREA



PET'S AREA



CRICKET NET





# SPECIAL FEATURES



MODULAR KITCHEN



FULLY AIR-CONDITIONED PREMIUM FLOOR



ADDITIONAL SPACE FOR WORK FROM HOME



PRIVATE SERVICE AREA



YOUR GREEN SPACE ON TERRACE

## BLOCK NUMBERING

SR. NO.	BLOCK TYPE	BLOCK NO.	PLOT TYPE
1	JASMINE	J40	B
2	JASMINE	J41	B
3	JASMINE	J42	B
4	JASMINE	J43	B
5	JASMINE	J44	B
6	JASMINE	J45	B
7	JASMINE	J46	M
8	JASMINE	J53	B
9	JASMINE	J54	B
10	JASMINE	J55	B
11	JASMINE	J56	B
12	JASMINE	J57	B
13	JASMINE	J58	B
14	JASMINE	J59	M
15	JASMINE	J66	B
16	JASMINE	J67	B
17	JASMINE	J68	B
18	JASMINE	J69	B
19	JASMINE	J70	B
20	JASMINE	J71	B
21	JASMINE	J72	M
22	JASMINE	J79	B
23	JASMINE	J80	B
24	JASMINE	J81	B
25	JASMINE	J82	B
26	JASMINE	J83	B
27	JASMINE	J84	B
28	JASMINE	J85	M
29	JASMINE	J100	B

SR. NO.	BLOCK TYPE	BLOCK NO.	PLOT TYPE
30	JASMINE	J101	B
31	JASMINE	J102	B
32	JASMINE	J103	B
33	JASMINE	J104	B
34	JASMINE	J105	B
35	JASMINE	J106	B
36	JASMINE	J107	B
37	JASMINE	J108	B
38	JASMINE	J109	B
39	JASMINE	J110	B
40	JASMINE	J111	B
41	JASMINE	J112	B
42	JASMINE	J113	B
43	JASMINE	J114	B
44	JASMINE	J115	B
45	JASMINE	J116	B
46	JASMINE	J117	M
47	JASMINE	J118	M
48	JASMINE	J119	A
49	JASMINE	J120	A
50	JASMINE	J121	A
51	JASMINE	J122	A
52	DAISY	D04	B
53	DAISY	D05	B
54	DAISY	D06	B
55	DAISY	D07	B
56	DAISY	D08	B
57	DAISY	D09	B
58	DAISY	D10	B

## SIGNATURE GLOBAL CITY 92-2





# BLOCK NUMBERING

SR. NO.	BLOCK TYPE	BLOCK NO.	PLOT TYPE
59	DAISY	D11	B
60	DAISY	D12	B
61	DAISY	D13	B
62	DAISY	D14	B
63	DAISY	D15	B
64	DAISY	D16	B
65	DAISY	D17	B
66	DAISY	D18	B
67	DAISY	D19	B
68	DAISY	D20	B
69	DAISY	D21	B
70	DAISY	D22	B
71	DAISY	D23	B
72	DAISY	D24	B
73	DAISY	D25	B
74	DAISY	D26	B
75	DAISY	D27	B
76	DAISY	D28	B
77	DAISY	D29	B
78	DAISY	D30	B
79	DAISY	D31	B
80	DAISY	D32	B
81	DAISY	D33	B
82	DAISY	D35	B
83	DAISY	D36	B
84	DAISY	D37	B
85	DAISY	D38	B
86	DAISY	D39	B
87	DAISY	D40	B

SR. NO.	BLOCK TYPE	BLOCK NO.	PLOT TYPE
88	DAISY	D41	B
89	DAISY	D46	B
90	DAISY	D47	B
91	DAISY	D48	B
92	DAISY	D49	B
93	DAISY	D56	B
94	DAISY	D57	B
95	DAISY	D58	B
96	DAISY	D59	B
97	DAISY	D60	B
98	DAISY	D61	B
99	DAISY	D62	B
100	DAISY	D63	B
101	DAISY	D64	B
102	DAISY	D65	B
103	DAISY	D66	B
104	DAISY	D67	B
105	DAISY	D68	B
106	DAISY	D69	B
107	DAISY	D70	B
108	DAISY	D71	B
109	MARIGOLD	M01	A
110	MARIGOLD	M02	A
111	MARIGOLD	M03	A
112	MARIGOLD	M04	A
113	MARIGOLD	M05	A
114	MARIGOLD	M06	A
115	MARIGOLD	M07	A
116	MARIGOLD	M08	A

# BLOCK NUMBERING

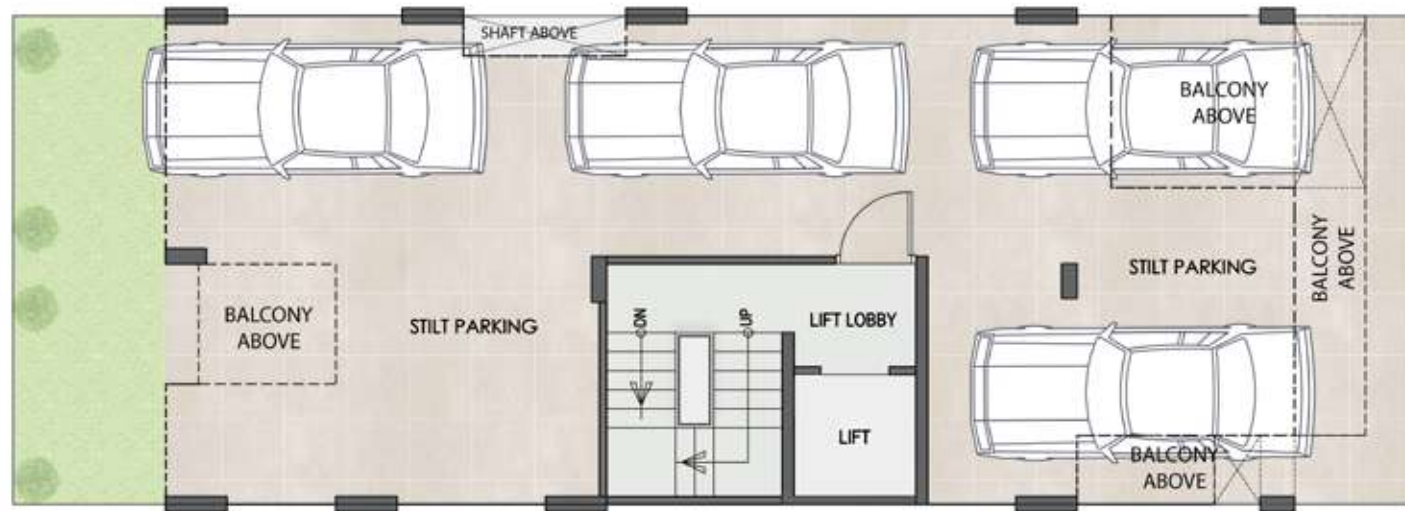
SR. NO.	BLOCK TYPE	BLOCK NO.	PLOT TYPE
117	MARIGOLD	M09	A
118	MARIGOLD	M10	A
119	MARIGOLD	M11	A
120	MARIGOLD	M12	A
121	MARIGOLD	M13	A
122	MARIGOLD	M14	A
123	MARIGOLD	M15	A
124	MARIGOLD	M16	A
125	MARIGOLD	M17	A
126	MARIGOLD	M18	A
127	MARIGOLD	M19	A
128	MARIGOLD	M20	A
129	MARIGOLD	M21	A
130	MARIGOLD	M22	A
131	MARIGOLD	M23	A
132	MARIGOLD	M24	A
133	MARIGOLD	M25	A
134	MARIGOLD	M26	A
135	MARIGOLD	M27	A
136	MARIGOLD	M28	A
137	MARIGOLD	M29	A
138	MARIGOLD	M30	M
139	MARIGOLD	M31	M
140	MARIGOLD	M32	M
141	MARIGOLD	M33	M
142	MARIGOLD	M34	A
143	MARIGOLD	M35	A
144	MARIGOLD	M36	A
145	MARIGOLD	M37	A

SR. NO.	BLOCK TYPE	BLOCK NO.	PLOT TYPE
146	MARIGOLD	M38	A
147	MARIGOLD	M39	A
148	MARIGOLD	M40	A
149	MARIGOLD	M41	A
150	MARIGOLD	M42	M
151	MARIGOLD	M43	A
152	MARIGOLD	M44	A
153	MARIGOLD	M45	A
154	MARIGOLD	M46	A
155	MARIGOLD	M47	A
156	MARIGOLD	M48	A
157	MARIGOLD	M49	A
158	MARIGOLD	M50	A
159	MARIGOLD	M51	A
160	MARIGOLD	M52	A
161	MARIGOLD	M53	A
162	MARIGOLD	M54	A
163	MARIGOLD	M55	A
164	MARIGOLD	M56	A
165	MARIGOLD	M57	A
166	MARIGOLD	M58	A
167	MARIGOLD	M59	A
168	MARIGOLD	M60	A
169	MARIGOLD	M61	M
170	MARIGOLD	M62	A
171	MARIGOLD	M63	A
172	MARIGOLD	M64	M

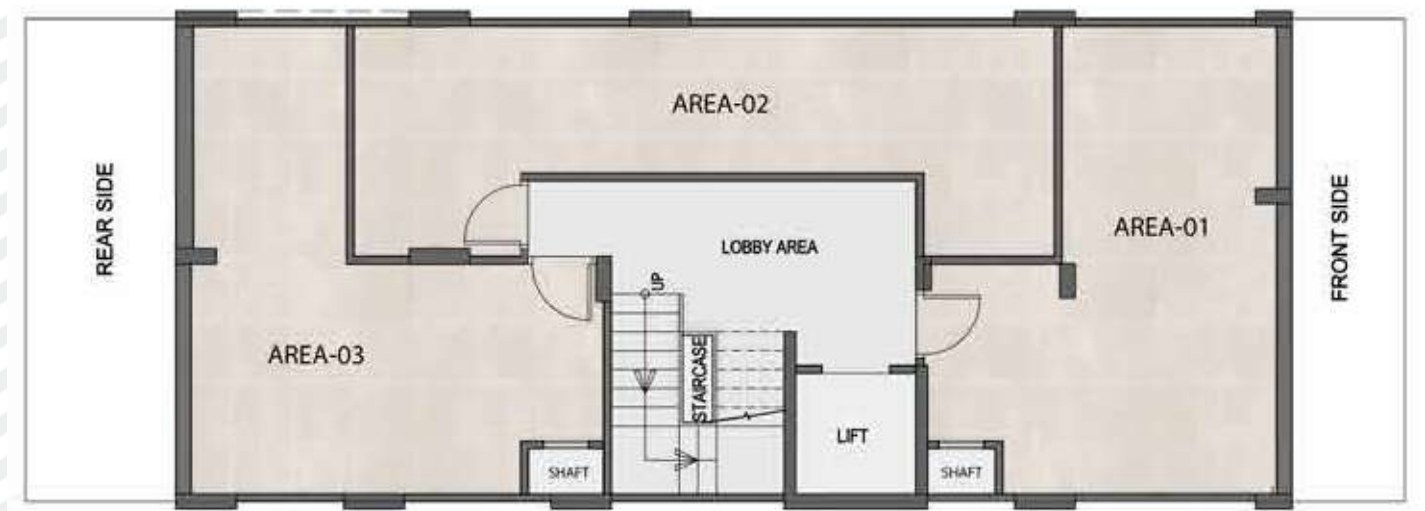




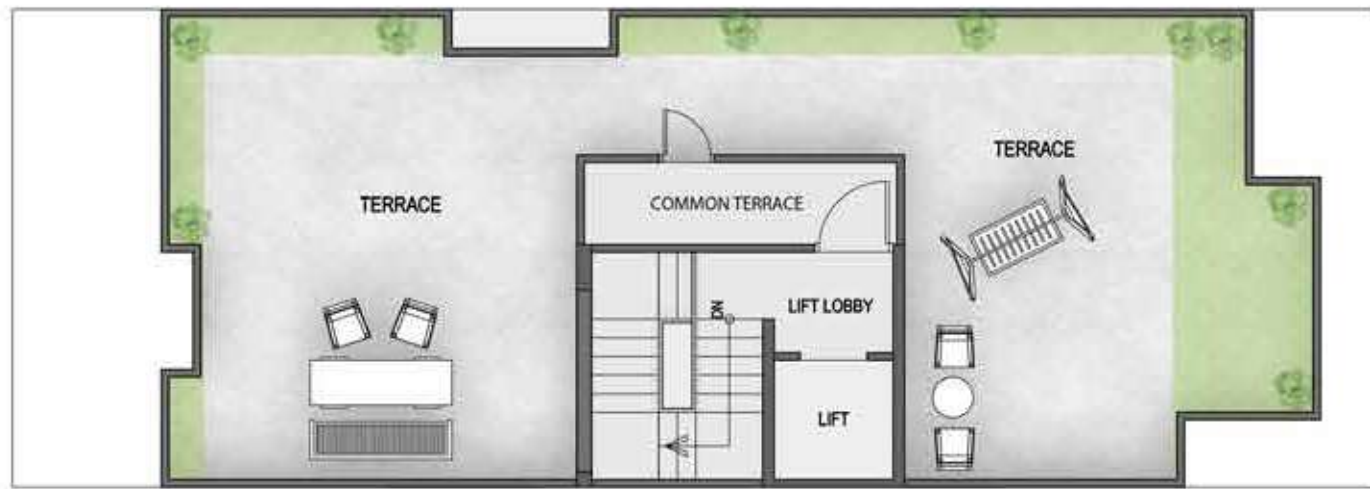
### STILT FLOOR PLAN



### BASEMENT PLAN



### TERRACE PLAN



### UNIT PLAN



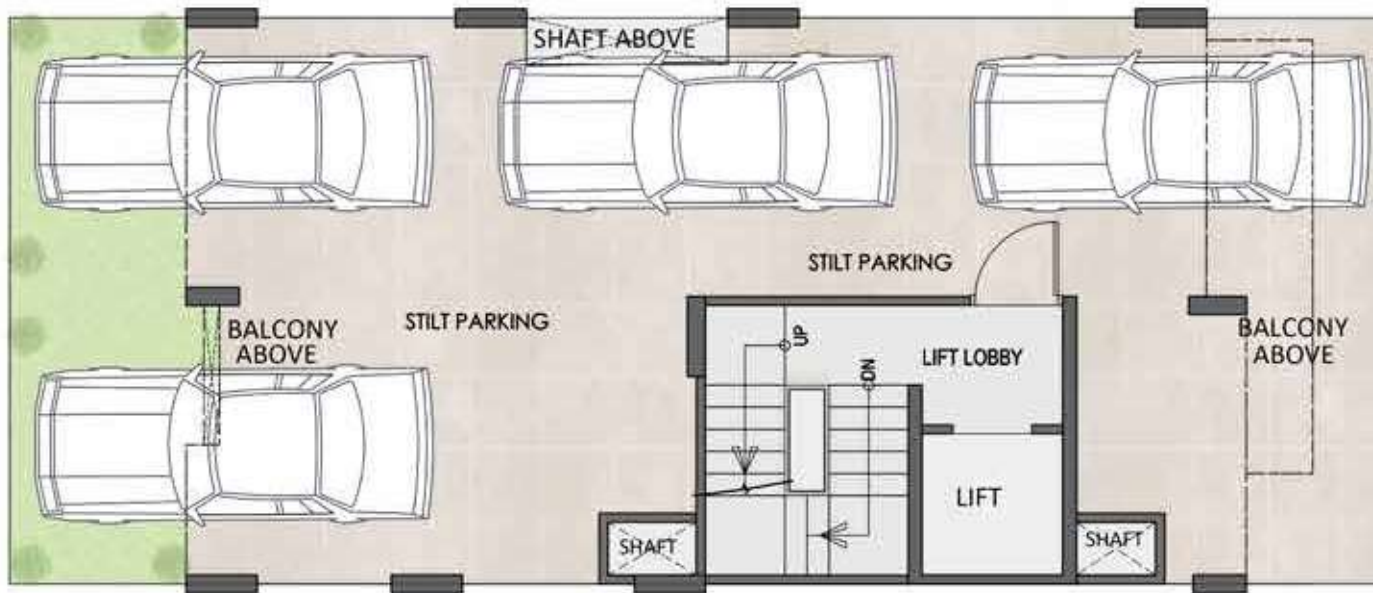
TYPE-A  
3BHK + 2 TOILET

SIGNATURE GLOBAL CITY 92-2

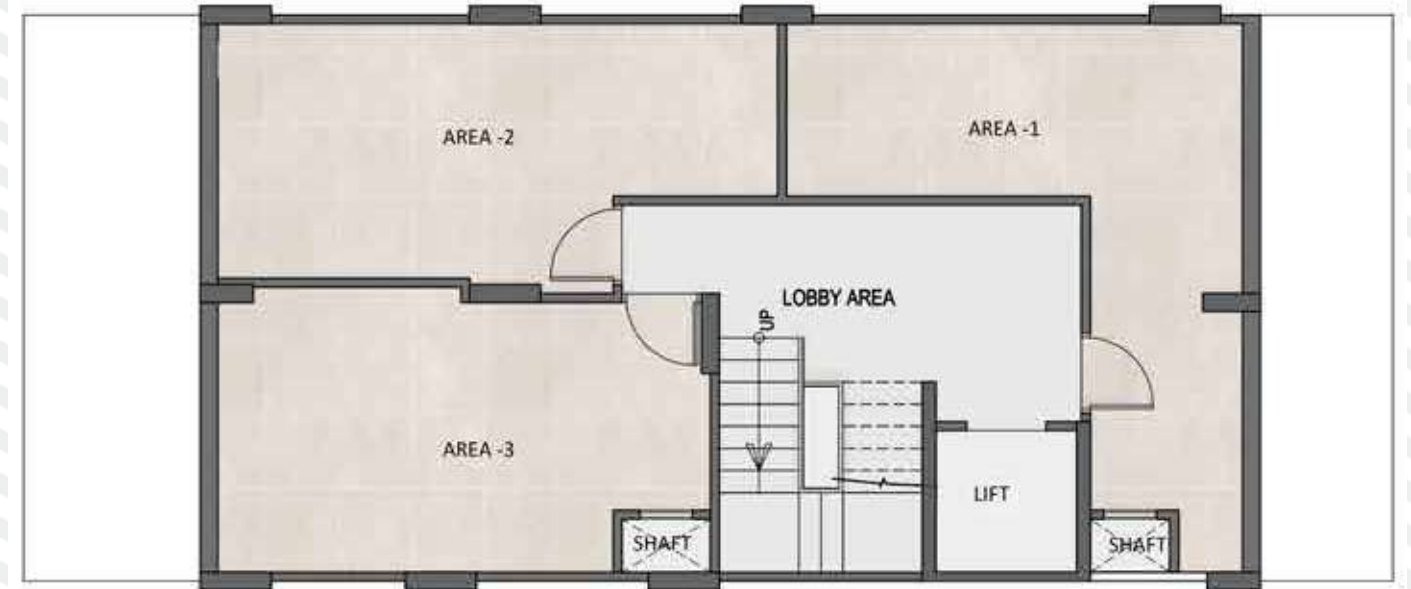




### STILT FLOOR PLAN



### BASEMENT PLAN



### TERRACE PLAN



### UNIT PLAN



TYPE-B  
2BHK + 2 TOILET

SIGNATURE GLOBAL CITY 92-2





# SPECIFICATIONS

## DRAWING / DINING ROOM



**FLOOR**  
VITRIFIED TILES



**CEILING**  
OIL BOUND DISTEMPER



**WALL**  
ACRYLIC EMULSION

## BALCONIES



**FLOOR**  
ANTI-SKID / MATT  
FINISH CERAMIC TILES



**RAILING**  
GLASS RAILING

## DOORS & WINDOWS



**MAIN / INTERNAL DOOR FRAME**  
HARD WOOD / RED MERANTI



**INTERNAL DOOR SHUTTERS**  
BOTH SIDE LAMINATED DOORS



**EXTERNAL DOORS & WINDOWS**  
UPVC/ALUMINIUM POWDER COATED

## ELECTRICAL



**WIRING**  
COPPER ELECTRICAL WIRING  
THROUGHOUT IN CONCEALED  
CONDUIT FOR LIGHT POINTS



**SWITCHES / SOCKET**  
ISI MARKED SWITCHES  
& SOCKETS

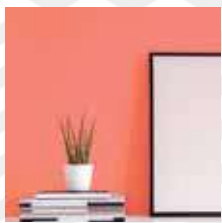
## BEDROOM



**FLOOR**  
VITRIFIED TILES



**CEILING**  
OIL BOUND DISTEMPER



**WALL**  
ACRYLIC EMULSION

## TERRACE



**BRICKBAT COBA OR**  
WATER PROOFING TREATMENT

## EXTERNAL DEVELOPMENT



**INTERNAL ROADS**  
INTERLOCKING BLOCKS/  
TREMIX CONCRETE ROAD



**BOUNDARY WALL**  
RCC / BRICK WALL  
WITH PLASTER &  
EXTERNAL WEATHER  
PROOF PAINT FINISH



**EXTERNAL PAINT**  
WEATHER PROOF TEXTURE  
PAINT IN BUILDINGS

## STRUCTURE



**EARTHQUAKE RESISTANT**  
RCC FRAMED STRUCTURE  
AS PER SEISMIC ZONE

## KITCHEN



**FLOOR**  
VITRIFIED /  
CERAMIC TILES



**WALL / CEILING**  
OIL BOUND DISTEMPER



**DADO**  
CERAMIC TILES 600 MM  
ABOVE THE COUNTER



**COUNTER TOP**  
GRANITE STONE



**FITTINGS & FIXTURES**  
ISI MARKED CP FITTINGS  
& SS SINK

## TOILET & BATH



**FLOOR**  
ANTI-SKID  
CERAMIC TILES



**WALL**  
CERAMIC TILES TILL  
4FEET / 7'-0" FEET



**CEILING**  
GRID FALSE CEILING



**FITTINGS & FIXTURES** ISI MARKED  
CP FITTINGS, WC & WASHBASIN

## BEST BRANDS FOR THE BEST EXPERIENCE

<p><b>TILES</b></p> <p>Kajaria VARMORA orientbell tiles</p>	<p><b>PAINTS</b></p> <p>Asian Paints Dulux Berger</p>	<p><b>DOOR LOCKS &amp; HANDLES</b></p> <p>Dorsët Quba IPSA</p>	<p><b>GLASS</b></p> <p>SAINT-GOBAIN UPVC DOORS &amp; WINDOW PROFILES KÖMMERLING ÖKOTECH</p>	<p><b>LIFTS</b></p> <p>OTIS KONE Schindler ELEVATORS BIRLA GROUP FUJITEC thyssenkrupp</p>	<p><b>PLUMBING PIPES</b></p> <p>Supreme ashirvad BIRLA   HIL PIPES LIGHTING wipro OSRAM LEDVANCE SYSKA BAJAJ</p>
<p><b>SWITCHES</b></p> <p>legrand Crabtree wipro NORTH-WEST</p>	<p><b>WOODEN DOORS</b></p> <p>Bhutan tuff ramaply</p>	<p><b>WIRES &amp; CABLES</b></p> <p>Finolex HAVELLS POLYCAB</p>	<p><b>CP BATH FITTINGS</b></p> <p>hindware Jaquar Kerovit</p>	<p><b>SANITARY FITTINGS</b></p> <p>hindware Jaquar KOHLER</p>	<p><b>KITCHEN SINK</b></p> <p>CARYSIL Jayna</p>

All products, names, logos, brands, trademarks are properties of their respective owners. Product of other companies may also be used. However, priority will be given to the aforesaid brands/companies.

Note : Flooring in mix design of marble, granite and tile. Accordingly, variations in shade and/ or size and/or colour and/or design of the tiles, motifs, mica etc. may occur.





